

# MegaDefense Product Overview

Document prepared by Wellness Industries, LLC.  
Parkland, FL USA

Correspondence:  
12502 West Atlantic Blvd  
Coral Springs, FL 33071  
Email [questions@megadsupport.com](mailto:questions@megadsupport.com)

---

**Introduction:** MegaDefense™ is a natural supplement comprised of micronized, activated zeolite (clinoptilolite) and a micronized blend of six certified organic, non-GMO medicinal mushrooms (*Agaricus blazei*, *Lentinula edodes*, *Grifola frondosa*, *Coriolus versicolor*, *Ganoderma lucidum* and *Cordyceps sinensis*).

This product is classified as a dietary supplement under US-FDA guidelines.

This monograph will outline the following:

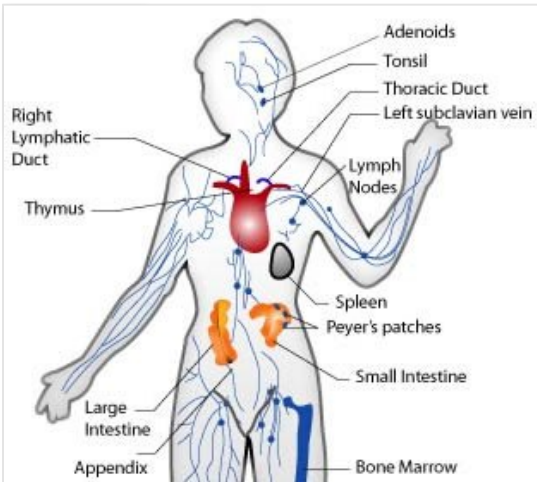
- Immune system overview
- Affects of toxins on the immune system
- Methods of detoxification
- Improving immune system function
- An overview of medicinal mushrooms
- Full spectrum chemistries
- IM6 Full Spectrum Immune Complex Overview
  - Clinical activity of *Agaricus blazei*.
  - Clinical activity of *Lentinula edodes*.
  - Clinical activity of *Grifola frondosa*.
  - Clinical activity of *Coriolus versicolor*.
  - Clinical activity of *Ganoderma lucidum*.
  - Clinical activity of *Cordyceps sinensis*.
- An overview of clinoptilolite.
- The synergies between the activity of the blend of medicinal mushrooms and zeolite.
- Unpublished clinical data on the research underway.

---

**Keywords:** antigen, antibody, phagocytes, lymphocytes, neutrophil, *medicinal mushroom*, *Agaricus blazei*, *Lentinula exodes*, *Grifola frondosa*, *Coriolus versicolor*, *Ganoderma lucidum*, *Cordyceps sinensis*, *immune system*, *leukocytes*, *NK*, *natural killers*, *detox*, *chelation*, *zeolite*, *clinoptilolite*.

## About the Immune System

The immune system is the body's defense against infectious organisms and harmful or toxic compounds. The basic function of the immune system is to attack organisms and substances that invade the body's systems through a series of steps called the "immune response".



This system involves a network of cells, tissues and organs that all work together to protect the body. Immune system cells are called "white blood cells" (**leukocytes**). These come in two basic types that combine to seek out and destroy disease-causing organisms or substances. The two basic types of leukocytes are:

1. **Phagocytes:** cells that absorb and destroy invading organisms
2. **Lymphocytes:** cells that allow the body to remember and recognize previous invaders and help the body destroy them (creation of antibodies)

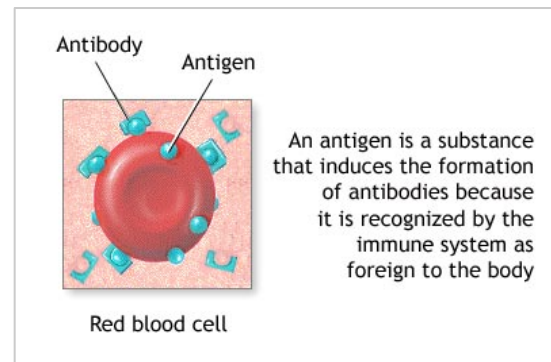
A number of different cells are considered phagocytes. The most common type is the **neutrophil**, which primarily fights bacteria. When looking for evidence of a bacterial infection, a physician may order a blood test to verify an increased number of neutrophils triggered by the infection.

There are several other types of phagocytes, each with their own specific function to make sure that the body responds appropriately to a specific type of invader.

The two kinds of lymphocytes are **B lymphocytes** and **T lymphocytes**. Lymphocytes are grown in the bone marrow and either mature there into B cells, or migrate to the thymus gland, where they mature into T cells. B lymphocytes and T lymphocytes have separate functions: B lymphocytes function as the body's intelligence system, seeking out their targets and sending defenses to lock onto them. T lymphocytes are like soldiers, destroying invaders that the intelligence system has identified.

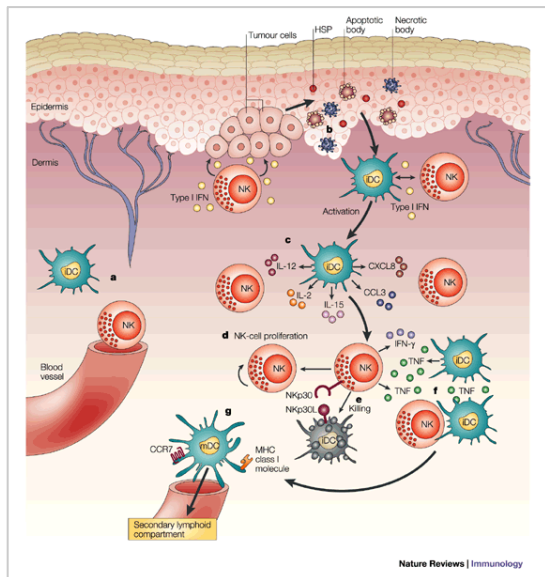
Here's how it all works:

When **antigens** (foreign substances that invade the body) are detected, several types of cells work together to recognize them and respond. These cells trigger the B lymphocytes to produce antibodies, specialized proteins that lock onto specific antigens.



Once antibodies are produced, they continue to exist in a person's body. These can recognize the same antigen at a later time, and allow the immune system to react quickly. As an example, if someone gets sick with a disease like chickenpox, that person typically doesn't get sick from it again. The immune system reaction is so fast; the person never experiences the symptoms of the disease. This is also how immunizations may prevent certain diseases.

An immunization (vaccination) introduces a safe or inactive version of an antigen to the body. This allows the body to produce antibodies that will then protect the person from future attack by the germ or substance that produces that particular disease. Although these antibodies have the ability to recognize an antigen and lock onto it, they cannot destroy the invader. T cells are tagged by antibodies or cells that have been infected or somehow changed. These become specialized hunters for the antigens that match their tagged antibodies.



These T cells are called "**Killer Cells.**" T cells then signal other cells (like phagocytes) to destroy the invader. Antibodies can also neutralize toxins (poisonous or damaging substances) produced by different organisms. Lastly, antibodies can activate the production of **complement** proteins that assist in killing bacteria, viruses or infected cells.

All of these specialized cells, and parts of the immune system, offer the body protection against disease. This protection is called **immunity.**

## Toxins Inhibit Immune System Function

The toxic effects of some metals, such as lead and arsenic, have been recognized for hundreds of years. There has been continuing medical and political concern over the increasing contamination of the environment by heavy metals. Because lead or other metals are so widely utilized in everyday life, they have the potential to pose a continuous risk for human and animal health.

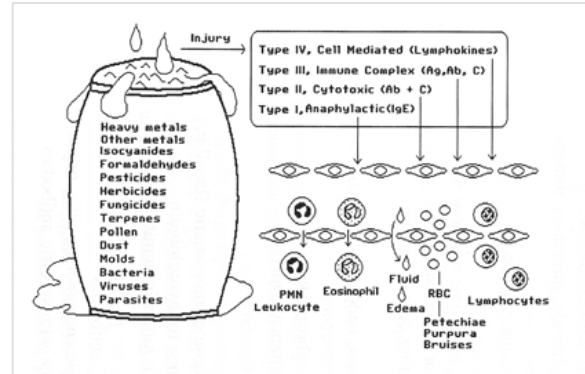
Heavy metals seem to interact with the immune system in antigen non-specific fashion. In most cases, the heavy metals compete with "good" metals in the function of metalloproteins and metalloenzymes. The good metals are essential to health because nature integrated them into human biochemistry—the size and charge of the essential metals integrate with the peptides, proteins and enzymes they are components of, allowing the biomolecules to fold properly and take on the form (3-dimensional structure) and function necessary to support life.



Heavy metals are smaller, higher charged ions that insert into these precisely folded peptides, proteins and enzymes, displace the essential metals and, simply because they are the wrong size and charge, change the 3-dimensional structure of the biomolecule, which alters both form and function. In doing so, the activity of those compounds are altered, decreased or completely inhibited.

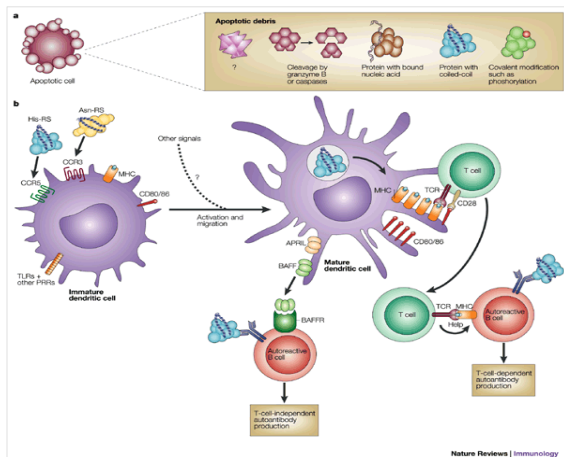
These metals exert direct toxicity to compounds of the immune system, which can either lead to malfunctioning of the system as a whole or to the disruption of the regulatory systems, which may give rise to exaggerated responses. The interaction of heavy metals with the immune system, which may lead to immunosuppression or immunodysregulation, may have consequences of allergy or autoimmunity, whereas autoimmunity or allergy induced by heavy metals may often result in the malfunctioning immune system.

Additionally, these heavy metal-containing compounds may also become targets of the immune response, in essence telling the B cells to create antibodies against natural compounds. These are called "autoantibodies" and can lead to autoimmune diseases like Multiple Sclerosis (MS) and Rheumatoid Arthritis (RA).



A high body burden has been implicated in the following:

- *Immunotoxicity* – leading to asthma, allergies, cancers and chronic disease;
- *Neurotoxicity* – leading to cognition impairment, memory loss as well as sensory and motor dysfunction;
- *Endocrine toxicity* – leading to reproductive issues, loss of libido and metabolic impairment.



## Methods of Detoxification

The body has a variety of mechanisms for dealing with toxicity, but the current total load exceeds the body’s ability to adapt. When the body fails to break down or remove these toxins, the only other way to deal with them is through sequestration. The body will try to deposit these compounds into tissue to minimize their potential damage. For example, lead may be sequestered into bone, displacing calcium and increasing the risk of osteoporosis. The overall load of these toxins is sometimes called the “body burden”.

Aside from limiting exposure, everyone should be actively aiding their bodies in the elimination of these toxins. Most programs for detoxification focus on the body's ability to excrete, either through perspiration or digestive elimination.

Saunas, which have been used to promote perspiration, can also lead to dehydration and electrolyte imbalance. "Natural" or "herbal" laxatives or diuretics are used to increase elimination through urination and fecal wasting. These include the ubiquitous colon cleanse products. By helping our bodies to remove waste quickly, it may aid in lowering the body burden over time.

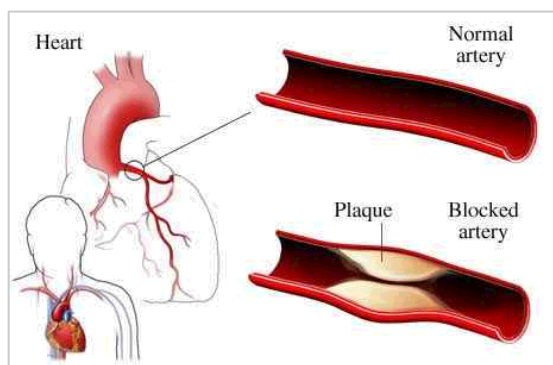
The problems associated with this form of detoxification include: dehydration, dependence and dumping. Any increase in fluid elimination may lead to dehydration and loss of electrolytes. It is important to drink plenty of water and maintain hydration during any detoxification program. Additionally, many diuretics and laxatives may create a dependence for the user.

The body becomes used to the aid in wasting and may cease to function normally without it. As an example, patients abusing natural laxatives may experience severe constipation when discontinuing their use. Lastly, the increase in wasting may facilitate the rapid removal of sequestered toxins from tissues. This is sometimes known as "dumping" and can lead to the side effects of detoxification, sometimes known as a "healing crisis" or "dumping syndrome". It's important to detox slowly in this fashion to prevent these issues.

### Chelation

A more direct method for removing toxic compounds is chelation therapy, especially for the removal of heavy metals. The term **chelation** (pronounced "key-layshun") comes from the Greek word *chela*, which means "claw," referring to the way the negatively charged chemicals used in this process grab onto positively charged metal molecules (ions).

The first commercially available chelating agent was a chemical called ethylene diamine tetraacetic acid (EDTA), which has a molecular structure that actually resembles a clawed hand.

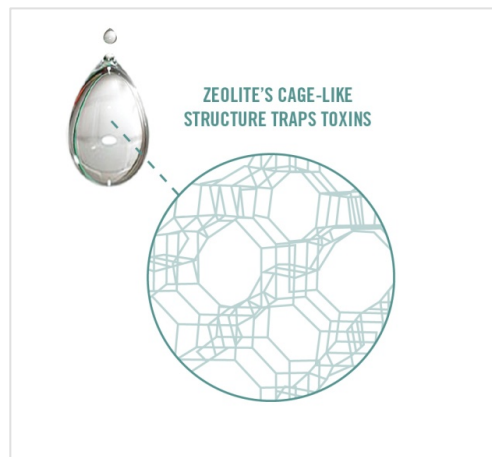


Chelating agents are substances that can chemically bond with toxic minerals, metals, and chemicals within the body. The proposed goal of chelation therapy is to remove harmful substances from the body by having a chelating agent form a complex with the toxic substance and allow the body to remove that complex using its natural mechanisms of waste product removal.

In essence, a chelating agent encircles a mineral or metal ion and carries it out of the body via urine and feces.

Classic chelation may not be well-tolerated in some people. It tends to be expensive and is usually supplied intravenously, which is certainly inconvenient. Additionally, chelating agents tend to be non-specific and may remove healthy metals (calcium, magnesium, etc.,) as well as toxic metals. Lastly, most chelators may cause a host of unwanted side effects, including: headaches, local skin irritation, nausea or stomach upset, diarrhea, feeling like fainting, extreme fatigue, fever, cramps and pain in the joints. Most of these side effects can be linked to dehydration or electrolyte imbalance caused by the chelating agent.

The newest research centers on the use of the mineral zeolite 'clinoptilolite'. When properly micronized and activated, the zeolite effectively attracts and traps small, highly-charged particles that fit into the pores and channels of the zeolite cage. This includes heavy metals (lead, cadmium, mercury, etc.), nitrosamines and environmental pollutants.



Understand that this is a passive process – when the zeolite is in close proximity to these compounds, they will be drawn to the zeolite and either absorbed into the cage or adsorbed onto the surface of the zeolite. Once trapped by the zeolite, these toxins are easily removed from the body.

## Improving Immune System Function

While toxins certainly have an influence on immune system health and activity, there are many other factors involved. Genetics play a role and some individuals are prone to either **immuno-suppression** (reduced immune system function) or **hyper-immunity** (an over-active immune system that may cause oxidative stress or an autoimmune reaction). As an example, asthma sufferers are prone to the hyper-immune response that leads to an asthma attack. Medications can also cause immune system dysfunction. Steroids, anti-inflammatory drugs and medications to treat autoimmune diseases will reduce the activity of the immune system and increase the risk for opportunistic infection. As an alternative, there are compounds that function as "immuno-modulators". These compounds act to improve overall immune system function without the risk of a hyper-immune response.

To reiterate, the immune system exists in a delicate balance. It needs to recognize foreign invaders to be able to protect the body, but the reaction needs to be measured. If the immune system over-reacts to a stimulus, it may cause much more damage than the original foreign body may have caused. As an example, an overactive immune system creates damaging free radicals that may increase risk for cancer or heart disease. It may also create inflammation that can cause tissue damage. Lastly, a hyper-immune response may create autoimmunity, where the immune system attacks normal, healthy tissue. Because of these risks, it is vital to create a viable check and balance system to maintain proper immune system health. This may be possible with natural immuno-modulating agents.

Medicinal mushrooms have been used as functional foods for thousands of years and clinically for more than a hundred years. The main constituents of the mushroom cell wall are polysaccharides that have been known to act as immuno-modulators. Specifically,  **$\beta$ -glucans** ("Beta-glucans") have been shown to improve overall immune system health without the risk for hyper-immunity.

## Full-Spectrum Chemistries

There is a lot of confusion today in the field of pharmaceutical mushrooms as to what form of mushroom product is the best for use. There are various components of the mushroom, which have been used as separated compounds. Is it the fruit-body, the mycelium or an extract standardized from some particular compound, which is responsible for the mushroom's properties? This question is not as straightforward as it seems.

- **Fruit body.** This is the mushroom seen above the ground. It is the spore-producing portion involved with reproduction. Basically, the fruit body is equivalent to the flower of a plant. Fruit bodies only form in response to some stress from the environment.
- **Mycelium.** This is the growth form of the organism under the ground where all of the life processes occur: growth, feeding, competing for survival and some forms of reproduction.
- **Broth.** In cultivated mushroom products, the mycelium can be grown either by fermentation, in a tank full of liquid "broth", or on a solid substrate of some material that is found in the natural growth condition.

For the production of many mushroom-derived drugs and health supplements, the compounds are extracted not from the mycelium but from the broth in which the mycelium is grown.

As an example, there are a number of pharmaceutical drugs produced from the Shiitake mushroom (*Lentinula edodes*): *lentinan* from the fruit body; *LEM* from the mycelium; and *KS-2* from the residual culture broth, an extracellular compound.

To extract lentinan from Shiitake mushrooms is a pretty straightforward chemical process. But what about another compound present in Shiitake, called eritadenine?

This compound is useful in the treatment of high cholesterol levels, while lentinan is used for the treatment of cancer.

So, what is the more valuable product: the raw, full-spectrum Shiitake or the standardized extract? The answer is neither, or both. It depends on what is hoped to be achieved with the supplement.

For general health-supplement usage, the best product is the one that has the greatest effectiveness over a broad range of potential conditions. In this example, it makes much more sense to use a full spectrum of products—the fruit body, mycelium and broth.

Research has shown that mixed chemistries play a more important role in the effectiveness of how unrelated chemistries might produce specific results. It is a complex form that is still not completely understood but produces clinical results not available with standardized extracts.

Most pharmaceutical mushrooms are utilized as extracts for their most potent and most successful products and formulas. But these are very specific and targeted extracts, made for the particular purpose of concentrating specific compounds.

There are two general categories of bioactive compounds found in pharmaceutical mushrooms:

1. The **polysaccharides**, which comprise most of the medicinal compounds, are soluble in hot water and not in alcohol. The immunostimulant type of action so well known in mushrooms is from this class of compounds. When looking for immunomodulation action, it is advisable to not use alcohol extracts as they will not be effective.
2. The **nucleosides**, another class of compounds, are soluble in non-polar solvents like alcohol and hexane. These compounds are usually smaller in molecular size and are more specific in their bioactivity compared with polysaccharides.

## Super Mushroom Blend

It is therapeutically best to utilize a blend of several mushroom species, because "the whole is greater than the sum of its parts." For one thing, it is easier for pathogens in the body to adapt and become resistant to one mushroom than to several.

Secondly, each mushroom species has a unique arsenal of anti-infective and immunomodulating agents.

These special agents include:

- Polysaccharides
- Glycoproteins
- Ergosterols
- Triterpenoids

The agents listed above are *precursors* to the more complex compounds, beta glucans. It is the synergy between ALL of these elements that makes mushrooms so medicinally powerful when consumed as a whole food—mycelium included.

Because mushrooms have such powerful immune-boosting effects, it isn't surprising that some have great potential for battling life-threatening conditions. Mushrooms that have been researched for their anti-tumor activity appear to increase the number and activity of killer T and natural killer (NK) lymphocytes, with no toxicity to healthy cells.

Cancer cells are notorious for "hiding" from chemo agents. New research has shown that certain mushroom extracts help chemotherapy drugs better locate and identify cancer cells by "uncloaking them," thereby making chemo more effective.

Medicinal mushrooms are also believed to strengthen the immune system of those undergoing chemotherapy, so cancer patients may get a double benefit.

Research has shown that mushrooms provide a variety of health benefits that may include the following:

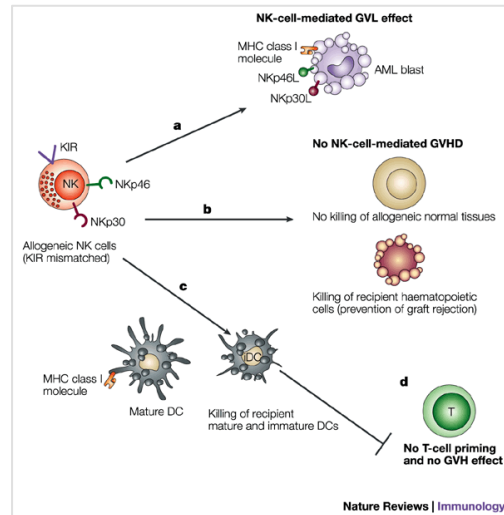
- Increased longevity
- Improved blood flow
- Cholesterol and blood sugar normalization
- Liver protection
- Kidney support
- Anti-viral, antibacterial and antifungal
- Improved respiratory function
- Reduced risk for heart disease
- Decreased platelet aggregation
- Improved blood flow
- Improved skin and hair
- Increased sexual function and athletic ability

A carefully designed blend of medicinal mushrooms may deliver a powerful therapeutic punch, with current research focusing on everything from protection against seasonal colds or flu, all the way to more serious health conditions.

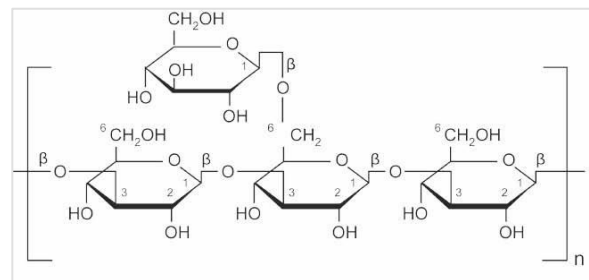
## IM6 Full Spectrum Immune Complex Overview

Pure, organic and patent-protected, **IM6 Full Spectrum Immune Complex** is considered to be the most technologically advanced immune blend for use in dietary supplements on the market today. Featuring a combination of more than 200 highly purified, immune-active high molecular heteropolysaccharides and Beta 1,3-1,6 triple right hand helix beta glucans, IM6 is derived from six closely related organisms—100% USDA certified organic, certified kosher, biotech lab cultivated, full spectrum, non-GMO *Agaricus blazei*, *Lentinula edodes*, *Grifola frondosa*, *Coriolus versicolor*, *Ganoderma lucidum* and *Cordyceps sinensis*.

Each of these species offers a slightly different polysaccharide structure, which activates many more types of immune cells than just simple beta glucans do. While yeast-based beta glucans activate only Natural Killer (NK) cells, research shows **IM6 Full Spectrum Immune Complex** activates all 260 different classes of immune cells including: NK cells, T cells, macrophages and many others.



**IM6 Full Spectrum Immune Complex** is a combination of both water-soluble heteropolysaccharide and high molecular weight non-soluble triple helix beta glucans. It is fully micronized through a proprietary process to a maximum particle size of less than 40 microns, which makes it instantly bioavailable.



These 1,3-1,6 beta-glucans have a range of molecular weight from less than 20 kD to over 2,000 kD, and are thought to be effective in activating a wide range of immune responses.



A tremendous body of reference work exists, indicating over 800 different species of higher basidiomycetes fungi (mushrooms) contain immune-modulating and anti-tumor polysaccharide compounds with this tertiary structure.

This has led to the development of a number of drugs of the Lentinan class. These drugs are widely used (primarily in Asia) as adjuncts in the treatment of cancer.

Prior to the introduction of **IM6 Full Spectrum Immune Complex**, all the mushroom-derived polysaccharide immune modulators brought to market have been derived from a single species of fungi, consisting of only a single molecular weight polysaccharide with single tertiary structure, which indicates the probable attachment to only single immune-triggering receptors at the cellular level.

However, recent advances in immune science have revealed a wide range of different cellular receptors, each of which attach to different structural types and sizes of polysaccharide molecules. This multi-receptor, multi-structure binding indicates multiple mechanisms of action in the triggering of immune responses, which is much more complex than was previously thought.

While it has been known since the 1970's that Natural Killer (NK) cells were activated by polysaccharide triggers, it is now believed that most, if not all, of the different classes of immune cells are activated or triggered by the attachment of either pure polysaccharides or protein-bound polysaccharide molecules to receptors found at the cell surface such as CR3, LacCer, Dectin-1 and other activation receptors.

It is this multi-receptor activation pathway that led to the development of **IM6 Full Spectrum Immune Complex**, which contains over 200 different immune-active polysaccharide structures. This complex polysaccharide formulation is thought to activate the full range of immune response in the human body.

The species of fungi from which these polysaccharide immune compounds are derived are: *Agaricus blazei*, *Lentinula edodes*, *Grifola frondosa*, *Ganoderma lucidum*, *Trametes (Coriolus) versicolor* and *Cordyceps sinensis*.

We will explore some of the history, benefits and research available for each of the six medicinal mushrooms featured in **IM6 Full Spectrum Immune Complex** in the pages that follow.

## Background of *Agaricus Blazei* (Sun) Mushroom

*Agaricus blazei* (*A. blazei*) is known in Brazil as the sun mushroom, in Japan as himematsutake, agarikusutake or kawarihiratake and in China as Ji Song Rong. It was brought to Japan in the 1970s due to its beneficial health effects, which included the prevention of: diabetes, hyperlipidemia, arteriosclerosis and chronic hepatitis<sup>1,2</sup>. Nowadays, it is widely utilized in Oriental countries as an edible mushroom. Considered as a functional food (functional food is a part of an everyday diet and is designed to reduce the risk of chronic disease beyond the widely accepted nutritional effects), it is vastly utilized in traditional medicine in the form of a medicinal extract for the prevention and treatment of cancer<sup>3</sup>.

In general, the total composition of the mushroom is water (90%), protein (2–40%), carbohydrates (1–55%), fiber (3–32%) and ash (8–10%). The ash content is made up mainly of salts, as well as metals like calcium and magnesium. Among the carbohydrates are notably some biologically active polysaccharides, present in the basidiocarp and/or mycelium, such as the  $\beta$ -glucans ("Beta-glucans") which have attracted the attention of investigators<sup>4</sup>.

**RESEARCH:** A recent study suggests that *Agaricus* extract has estrogen-like activity and may help prevent atherosclerosis via dual roles in cell signaling, macrophage development suppression and endothelial cell recovery from vascular damage<sup>5</sup>.

A major constituent of *Agaricus*, ergosterol, was found to inhibit tumor growth in mice via direct inhibition of tumor-induced angiogenesis<sup>6</sup>. Other studies demonstrated that polysaccharides present in *Agaricus* extract caused activation of macrophages or natural killer cells<sup>7</sup> and induced cytotoxic T-lymphocyte activity in tumor-bearing mice. Specifically, activation of natural killer cells was mediated through IL-12-induced IFN-gamma expression<sup>8</sup>.

Both aqueous and organic extracts of *Agaricus* offered protection to cells exposed to methyl methanesulphonate, a mutagenic agent. The stimulus produced by linoleic acid on beta-DNA polymerase, an enzyme involved in repair mechanism following exposure of DNA to alkylating agents, is thought responsible for such an effect<sup>9</sup>. Furthermore, *Agaricus* extract stimulates caspase 3 activation and reduces telomerase activity<sup>10</sup> possibly through regulation of Akt signaling thereby inducing apoptosis in cancer cell lines. Blazeispirol A, produced by *Agaricus* fermentation, causes both caspase-dependent and -independent cell death in human Hep 3B cells<sup>11</sup>. Agaritine, a hydrazine-containing constituent exhibits anti-tumor activity toward U937 leukemic cells mediated through apoptosis<sup>12</sup>.

## **Background of *Lentinula Edodes* (Shiitake) Mushroom**

Shiitake, an edible mushroom indigenous to East Asia, is cultivated worldwide for its purported health benefits. The fresh and dried forms of the mushroom are commonly used in East Asian cooking. It is also valued as a medicinal mushroom. Shiitake is popular in many countries around the world and is commonly found in supermarkets and Asian grocery stores.

Lentinan ([1,3] beta-D-glucan), a polysaccharide isolated from shiitake, is thought to be responsible for many of the mushroom's beneficial effects.

An injectable form of lentinan is used for cancer treatment in some countries, but it has not been evaluated in large studies.

**RESEARCH:** In vitro studies conducted with lentinan have indicated its anticancer effects in colon cancer cells<sup>13</sup>; these effects may result from its ability to suppress cytochrome P450 1A enzymes that are known to metabolize pro-carcinogens to active forms<sup>14</sup>.

Lentin, the protein component of shiitake, has been shown to exert antifungal properties, as well as inhibiting the proliferation of leukemic cells, and suppressing the activity of HIV-1 reverse transcriptase<sup>15</sup>.

Studies of shiitake extracts suggest antiproliferative<sup>16</sup>, immunostimulatory<sup>17</sup>, hepatoprotective<sup>18</sup>, antimutagenic<sup>19</sup>, and anticarcinogenic<sup>20</sup> effects in vitro and in mice. But a clinical trial failed to show any benefit of an oral shiitake extract in the treatment of prostate cancer<sup>21</sup>.

More recently, however, improvements were reported in quality of life and survival with an oral formulation of superfine dispersed lentinan in patients with hepatocellular carcinoma<sup>22</sup>, gastric cancer<sup>23</sup>, colorectal cancer<sup>24</sup>, and pancreatic cancer<sup>25</sup>. Larger, well-designed studies are needed to determine whether oral lentinan is superior to the injectable form.

## **Background of *Grifolia Frondosa* (Maitake) Mushroom**

*Grifolia frondosa* is a species of mushroom usually referred to as maitake in Japan, where it's indigenous. The mushroom is one of many recognized medicinal mushrooms in Japan and China, but a majority of Western scientists and doctors believe its health benefits are largely folklore. However, scientific investigation during the last decade in Asia has shown that maitake mushrooms contain many nutrients beneficial for health.

Grifola frondosa has been used in Japan and other Asia countries as a food source and medicine for a few thousand years. It was commonly referred to as the dancing mushroom in earlier times because people danced for joy when they found some in the wild -- the mushrooms were known to be strongly medicinal, so they were quite valuable.

**RESEARCH:** In 2009, a phase I/II human trial, conducted by Memorial Sloan-Kettering Cancer Center, showed Maitake could stimulate the immune systems of breast cancer patients<sup>26</sup>. Small experiments with human cancer patients, have shown Maitake can stimulate immune system cells, like NK cells<sup>27</sup>. *In vitro* research has also shown Maitake can stimulate immune system cells<sup>28</sup>. An *in vivo* experiment showed that Maitake could stimulate both the innate immune system and adaptive immune system<sup>29</sup>.

*In vitro* research has shown Maitake can induce apoptosis in cancer cell lines (human prostatic cancer cells, Hep 3B cells, SGC-7901 cells, murine skin carcinoma cells) as well as inhibit the growth of various types of cancer cells (canine cancer cells, bladder cancer cells). Small studies with human cancer patients, revealed a portion of the Maitake mushroom, known as the "Maitake D-fraction", possess anti-cancer activity. *In vitro* research demonstrated the mushroom has potential anti-metastatic properties<sup>30-35</sup>. In 1997, the U.S. Food and Drug Administration (FDA) approved an Investigational New Drug Application for a portion of the mushroom.

Research has shown Maitake has a hypoglycemic effect, and may be beneficial for the management of diabetes<sup>36,37</sup>. The reason Maitake lowers blood sugar is due to the fact the mushroom naturally contains an alpha glucosidase inhibitor<sup>38</sup>.

Maitake contains antioxidants and may partially inhibit the enzyme cyclooxygenase<sup>39</sup>. An experiment showed that an extract of Maitake inhibited angiogenesis via inhibition of the vascular endothelial growth factor (VEGF)<sup>40</sup>.

Lys-N is a unique protease found in Maitake. Lys-N is used for proteomics experiments due to its protein cleavage specificity<sup>41</sup>.

## Background of *Coriolus Versicolor* (Turkey Tail) Mushroom

*Coriolus versicolor* is a mushroom used in traditional Asian herbal remedies. Two substances extracted from the mushroom, polysaccharide K (PSK) and polysaccharide-peptide (PSP), are being studied as possible complementary cancer treatments. *Versicolor* polysaccharide (VPS), another extract from the mushroom that is sold as a dietary supplement in the United States, is also being studied.

*Coriolus versicolor* has been a component of traditional Asian medicine for centuries. In the 1980s, the Japanese government approved the use of PSK for treating several types of cancer. In Japan, PSK is a best-selling anti-cancer drug where it is currently used as a cancer treatment along with surgery, chemotherapy, and radiation therapy. PSP was discovered more recently and has been studied mainly in China.

*Coriolus versicolor* is thought to be a biological response modifier. The proteoglycan constituents are responsible for its immunostimulant and anticancer activities.

**RESEARCH:** Many different mechanisms of action have been proposed for the activity of these components. PSK has been found to induce cytokine expression in human peripheral blood mononuclear cells *in vitro*. In another studies, PSP, as well as *Coriolus* extract, selectively induced apoptosis of human promyelocytic leukemia HL-60 cells<sup>42,43</sup>. It also increased apoptotic cell death in cells that had been treated with the chemotherapeutic agent, camptothecin.

In these cells, PSP reduced cellular proliferation, inhibited cell progression through both the S and G2 phases of DNA replication, reduced 3H - thymidine uptake, and prolonged DNA synthesis time<sup>44</sup>. An additional in vitro study showed that a medicinal mushroom blend that included *Coriolus Versicolor* inhibited cell proliferation and induced cell cycle arrest at the G2/M phase in the invasive human breast cancer cell line MDA-MB-231<sup>45</sup>. DNA-microarray analysis indicated that the mushroom extract inhibited the expression of cell cycle regulatory genes and suppressed metastatic behavior through the inhibition of cell adhesion, cell migration, and cell invasion. The inhibition of metastatic behavior was linked to the suppression of urokinase plasminogen activator (uPA)<sup>46</sup>. PSP has also been shown to inhibit the interaction between HIV-1 gp120 and CD4 receptor, HIV-1 transcriptase activity, and glycohydrolase enzyme activity associated with viral glycosylation<sup>47</sup>.

Researchers have found that PSK, one of the substances that can be extracted from *Coriolus versicolor*, has several anti-cancer properties. In some animal studies, it slows the spread of cancer cells. PSK also appears to have some immune system-boosting properties in people undergoing chemotherapy and may lessen some side effects of chemotherapy and radiation therapy<sup>48</sup>. PSK is also believed to be a strong anti-oxidant, a compound that blocks the action of free radicals, activated oxygen molecules that can damage cells<sup>49</sup>.

More than 2 dozen human studies of PSK have been reviewed by experts at the University of Texas MD Anderson Cancer Center. Almost all of these studies were done in Japan and focused on cancer of the esophagus, stomach, colon, or breast. Most of them found that people with cancer were helped by PSK. People who received PSK with other treatments, such as surgery, chemotherapy, or radiation therapy, generally had longer periods of time without disease and had increased survival rates compared with patients who received only standard treatment. Side effects from PSK in these studies were very mild.

Smaller studies have suggested PSK may not be as effective against liver cancer or leukemia<sup>50-53</sup>.

## Background of *Ganoderma Lucidum* (*Reishi*) Mushroom

Usually known as *Reishi* or *Ling zhi*, *Ganoderma Lucidum* is one of the highest ranked medicines in Chinese medicine and has extended to usage in Japanese and Korean medicine as well as having some prevalence in the West.

Its mechanisms are diverse, but are usually localized around moderating the immune system (reducing its activity when overstimulated, increasing its effects when deficient) and proliferating the immune system at the same time, increasing the amount of active cells and thus the potential for their effects.

*Ganoderma* also possesses anti-oxidative effects, and can act on a few other systems such as aldose reductase (which can help with diabetic symptoms) and 5-alpha reductase (which can help with prostate cancer risk). Due to these effects paired with the modulation of the immune system, *Ganoderma Lucidum* shows promise in being *therapeutic* for insulin resistance, prostate cancer risk, and a variety of conditions correlated with metabolic syndrome.

It is also well known and touted for its anti-cancer effects, which are secondary to both potentiating the immune system (usually through activation of natural killer cells, and increasing tumor necrosis factor-alpha) and also some other mechanisms that allow *Ganoderma* to be synergistic within itself in reducing tumor growth and reducing the chance of metastasis.

Although it awaits replication in more trials, it shows promise in a wide variety of cancer-related and therapeutic goals; *Reishi* has demonstrated efficacy as an adjunct therapy (taken alongside other medications) for breast cancer, hepatitis, fatigue syndrome and prostate cancer in human trials so far.

**RESEARCH:** Derived from the cap and stem of the mushroom, reishi mushroom is used as an immunestimulant by patients with HIV and cancer. The active constituents are thought to include both beta-glucan polysaccharides and triterpenes<sup>54</sup>. Extracts of reishi can stimulate macrophages, alter the levels of TNF and interleukins<sup>55,56</sup>, inhibit platelet aggregation<sup>57</sup>.

Clinical studies indicate that Reishi extracts improve lower urinary tract symptoms (LUTS) in men<sup>58,59</sup>, exert mild antidiabetic effects and may improve dyslipidaemia<sup>60</sup>.

In vitro and animal studies indicate that reishi has chemopreventive effects<sup>61</sup>, alleviates chemotherapy-induced nausea<sup>62</sup>, enhances the efficacy of radiotherapy<sup>63</sup>, and increases the sensitivity of ovarian cancer cells to cisplatin<sup>64</sup>. It was also effective in preventing cisplatin-induced nephrotoxicity<sup>65</sup>.

In small clinical studies, reishi increased plasma antioxidant capacity<sup>66</sup>, and enhanced immune responses in advance-stage cancer patients<sup>67</sup>. Remission of hepatocellular carcinoma (HCC) has been reported in a few cases<sup>68</sup>.

## Background of *Cordyceps Sinensis* (Catepillar) Mushroom

The *Cordyceps* mushrooms have a long history as medicinal fungi. The earliest clear record is a Tibetan medical text authored by Zurkhar Nyamnyi Dorje in the 15th Century outlining the tonic propensities of Yartsa gunbu (*Cordyceps sinensis* renamed now to *Ophiocordyceps sinensis*), especially as an aphrodisiac<sup>69</sup>. Modern scientific studies have confirmed and expanded on the findings of traditional Chinese medicine, that the *Cordyceps* fungus has a multitude of health benefits.

As with the other medicinal mushrooms previously mentioned, *Cordyceps sinensis* contains extremely high levels of polysaccharides - especially beta-glucans as well as antioxidants and a unique nucleoside known as Cordycepin<sup>70</sup>.

Cordycepin (3'-deoxyadenosine) is a derivative of the nucleoside adenosine, differing from the latter by the absence of oxygen in the 3' position of its ribose part. Because cordycepin is similar to adenosine, some enzymes cannot discriminate between the two. Therefore, it can participate in certain biochemical reactions (for example, be incorporated into an RNA molecule, thus causing the premature termination of certain RNA or protein synthesis). This may be a probable mechanism for the antiviral properties of *Cordyceps sinensis*.

**RESEARCH:** In traditional Chinese medicine (TCM), the main use of *Cordyceps* has been in the treatment of asthma and other bronchial conditions<sup>71</sup>. Studies have shown that *Cordyceps* may be effective against tuberculosis<sup>72</sup>, leprosy and human leukemia<sup>73</sup>.

*Cordyceps* has been shown to provide many health benefits in clinical studies as well as in vivo analyses.

The best-known medicinal action of *Cordyceps* is in the increase of physical stamina. In 1993, the Chinese National Games brought this mushroom to the attention of the world's sporting authorities. A group of nine women athletes who had been taking *Cordyceps* shattered nine world records. Clinical research has shown that *Cordyceps* use increased cellular bio-energy, ATP (adenosine triphosphate)<sup>74</sup>. Increased synthesis of ATP and faster energy recovery have been reported. It would seem that *Cordyceps* improves the internal balance mechanism, thus making the utilization of oxygen more efficient. These properties may account for the overall physical enhancement, the extra endurance and the anti-fatigue effects that been reported in humans using *Cordyceps*.

Several scientific studies have demonstrated the benefits of *Cordyceps sinensis* in alleviating the symptoms of various respiratory illnesses including chronic bronchitis and asthma<sup>71</sup>.

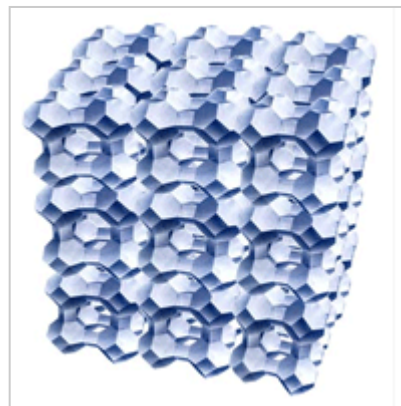
Numerous studies have demonstrated the benefits of *Cordyceps sinensis* in treating heart rhythm disturbances such as cardiac arrhythmia and chronic heart failure<sup>75,76</sup>.

As with the other medicinal mushrooms, *Cordyceps* has been found to enhance "natural killer" (NK) cell activity, thus increasing T-cell production and acting as an immunomodulatory agent<sup>77</sup>. Extracts of *Cordyceps sinensis* have also shown promise in studies of liver disease<sup>78</sup>, numerous cancers<sup>73,79-81</sup> and sexual dysfunction<sup>82</sup>.

## Background of clinoptilolite

Zeolites are a family of crystalline aluminosilicate minerals. The first zeolite was described in 1756 by Cronstedt, a Swedish mineralogist who coined the name from two Greek words meaning 'boiling stones', referring to the evolution of steam when the rock is heated. About fifty different natural zeolites are now known and more than one hundred and fifty have been synthesized for specific applications such as industrial catalysis or as detergent builders.

Clinoptilolite is a naturally-occurring zeolite, formed by the devitrification (ie the conversion of glassy material to crystalline material) of volcanic ash in lake and marine waters millions of years ago. It is the most researched of all zeolites and is widely regarded as the most useful. In common with other zeolites, clinoptilolite has a cage-like structure consisting of  $\text{SiO}_4$  and  $\text{AlO}_4$  tetrahedra joined by shared oxygen atoms. The negative charges of the  $\text{AlO}_4$  units are balanced by the presence of exchangeable cations - notably calcium, magnesium, sodium, potassium and iron. These ions can be readily displaced by other substances, for example heavy metals (mercury, lead, cadmium, etc..) and ammonium ions.



This phenomenon is known as cationic exchange, and it is the very high cationic exchange capacity of clinoptilolite which provides many of its useful properties. Clinoptilolite is currently used in diverse applications such as drinking water purification, air filtration, plant fertilizer and as an animal feed additive. Many studies have shown that clinoptilolite absorbs toxins created by molds in animal feeds<sup>83</sup>, as well as enhancing nutrient absorption by cattle, pigs, lambs and other animals<sup>84-86</sup>. In the United States, clinoptilolite falls under the category of sodium aluminosilicate and has GRAS (Generally Recognized as Safe) status used primarily as an anti-caking agent (Code of Federal Regulations, Title 21, Section 182.2727)<sup>87</sup>.

Because of its cage-like structure and negative charge, clinoptilolite has the ability to draw to itself and trap within itself positively charged heavy metals and other toxic substances. The zeolite in the MegaDefense™ attracts and traps small, highly-charged particles that fit into the pores and channels of the zeolite cage.

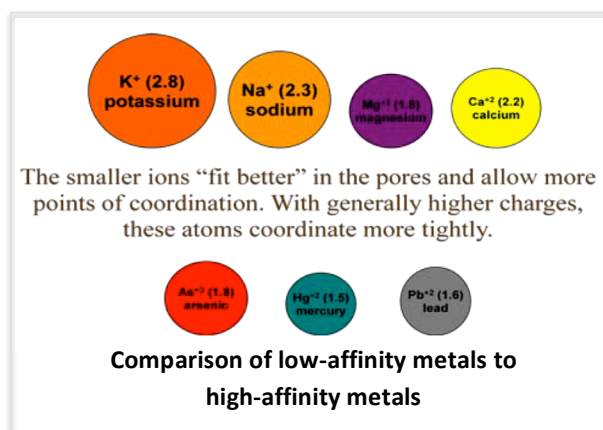
Whereas most chelating agents used for detoxification are non-specific, only relying on charge for binding potential, the clinoptilolite seems to be highly specific for the toxic heavy metals. Research has shown that the smaller the diameter of the metal and the higher the charge of the metal, the greater the affinity it has for the activated zeolite. Higher charges simply increase the strength of binding with higher binding characteristics.

The small size allows for deeper access into the zeolite pores with more points of coordination (attachment). Larger atoms do not fit into the zeolite cage as well and so are more easily exchanged for higher-affinity metals. As an example of this phenomenon, arsenic has a charge of +3 and an atomic radius of approximately 1.8 angstroms, while potassium has a charge of only +1 and an atomic radius of approximately 2.8 angstroms. The arsenic binds with very high affinity for the zeolite while the potassium has no affinity whatsoever<sup>88,89</sup>.

The metals that are toxic to humans are toxic *because* they are smaller atoms that carry a higher positive charge and can easily displace the essential electrolytes, which tend to be larger and have less charge density. These essential ions are not essential *because* they are larger or “weaker”, they are essential because nature integrated them into human biochemistry - the size and charge of the essential metals integrate with the peptides, proteins and enzymes they are components of, allowing the biomolecules to fold properly and take on the form and function necessary to support life.

The smaller, higher charged ions insert into these precisely folded peptides, proteins and enzymes, displace the essential metals and, simply because they are the wrong size and charge, change the 3-dimensional structure of the biomolecule which alters both form and function. Size and charge, in this case, are simply circumstantial to activity. The zeolite in the MegaDefense preferentially binds smaller, more charge-dense ions. That is the primary characteristic for which it was selected for use in the product. Metals with a smaller size and a higher charge will bind with greater affinity for the zeolite. The smaller size allows for deeper penetration into the zeolite cage. Additionally, the smaller size allows for more points of coordination with the zeolite. In other words, more of the surface of a small atom will be held directly by the zeolite. The higher charge allows for a tighter bond simply because of charge-to-charge interactions. Consider the example of refrigerator magnets to illustrate this point. A weak magnet will not stick well to the side of a refrigerator

and will not even hold one piece of paper. This is like a metal with a low charge trying to be held by the high negative charge of the zeolite. A strong magnet can hold many pieces of paper to the refrigerator and is hard to remove because of its strong interaction. This is similar to a metal with a high positive charge that will bind very strongly to the high negative charge of the zeolite cage. As we stated previously, all of the metals that are good for us (magnesium, calcium, potassium, etc..) tend to be large with lower charges. All of the metals that are toxic (mercury, lead, arsenic, etc..) tend to be smaller with higher positive charges.



The clinoptilolite binds a variety of toxins. This includes heavy metals (Lead, Cadmium, Mercury, etc..), nitrosamines<sup>90</sup> and others. Cationic exchange is an entirely passive process – when the zeolite is in close proximity to these high-affinity compounds, they will be drawn to the zeolite and either absorbed into the cage or adsorbed onto the surface of the zeolite. There is no chemical activity in this process.

The zeolite will not be drawn to compounds in an effort to 'rip' metals away from them. In other words, the zeolite will not pull metals that are sequestered inside tissue or bone. If, on the other hand, the tissue has already released free metals into the system, the zeolite will have the ability to trap and remove it.

Clinoptilolite has been studied for its effects in enhancing the immune system<sup>91,92</sup>, acting as an antioxidant<sup>93,94</sup>, balancing pH<sup>95,96</sup>, protecting against certain viruses<sup>97,98</sup>, binding radioactive particles<sup>99-101</sup> as well as potential carcinogens and acting as an adjunct to various cancer therapies<sup>102-104</sup>.

## Uniqueness of the zeolite contained in *MegaDefense™*

Research conducted in the development of the Natural Cellular Defense (NCD) found that there were two major obstacles in using natural clinoptilolite as a dietary supplement and oral chelator.

- First, the average particle size of mined clinoptilolite is 40-250 microns. Particles in this size range are far too large to allow for absorption from the digestive tract into the bloodstream. Therefore, every zeolite that had been used previously would be primarily a digestive cleanser. In order to utilize the zeolite as a systemic detoxifier, the crystals would have to be reduced in size to less than 2 microns.
- The second issue is one of activity. Natural zeolites act as filters in nature, absorbing a variety of toxins that surround the minesite. Clinoptilolite analyzed from the minesite contains heavy metals, volatile organic compounds (VOCs) and other high-affinity toxins that, in essence, take up space in the crystal – thus limiting its potential to detoxify by reducing its available surface area.

To remedy these issues, the product is manufactured in two distinct steps: *Micronization* and *Activation*.

### ***Micronization***

The zeolite mineral used in NCD is reduced in size mechanically, prior to the activation process, to a size of 0.39 to 5 microns.

This does not destroy the properties of the molecule. To the contrary, reducing the particle size increases access to the charged “cages” that would otherwise be unusable. For instance, a micron-sized particle has millions of “pores” available to bind heavy metals and other toxins. The small size of the particle permits diffusion deep within itself, allowing access to the inner “cages” that would be inaccessible in a larger particle due to limitations in diffusion distance. Most importantly, the structure of the individual “cages”, and therefore the ability to sequester heavy metals and other toxins, is unaffected.

Consider this: If a five-carat diamond is broken into five one-carat diamonds, the structure of each one-carat diamond is exactly like that of the original five-carat diamond, only smaller. And if that one-carat diamond were pulverized into dust, each resulting, tiny piece of diamond would have the same structure and properties of the original five-carat diamond. The Silicon-Oxygen bonds in the zeolite are even more thermodynamically stable, i.e. are stronger, than the Carbon-Carbon bonds of the diamond. It would take a concerted effort and extreme amounts of energy to reduce the zeolite to particles that no longer possessed the characteristic “cage” structure and therefore the ability to sequester toxic metal ions. Nature required over 1000°C and tremendous pressures to create a zeolite. The conditions used to activate Clinoptilolite, the zeolite used in NCD, are insufficient to dehydrate the mineral or alter its physical characteristics.

Micronization of the zeolite also allows for uptake into the bloodstream from the digestive tract.

Many compounds (minerals and pharmaceuticals/nutraceuticals) are absorbed in the gut that are in this size range. For example: sucrose molecules greater than 2 microns are absorbed through the gut; several sugar-coated proteins (biopharma oral preparations designed to prevent digestion in the stomach prior to absorption) are in the 3-5 micron range and are easily absorbed; albuterol sulfate has an average particle size of 4 microns and is absorbed through the lung mucosa (which has similar



permeability to the gut mucosa); pharmaceutical preparations of the immunosuppressant, cyclosporin, consist of particles 2-4 microns in size. In short, the concept of absorbing a particle that is sub-0.5 to 5 microns is generally well established. Additionally, preliminary studies done on human volunteers taking the Natural Cellular Defense chronically have demonstrated the presence of clinoptilolite in the serum at concentrations greater than 1ng/dL.

### **Activation**

The Natural Cellular Defense is manufactured under a closely-guarded, proprietary process. The primary goal of this process is to remove the toxins naturally present in the mineral. Just as it does in the body, zeolite absorbs metal ions and other toxins that filter through it as it sits in the ground waiting to be mined. The toxins that the mineral absorbs prior to being mined do not make it dangerous, *per se*, as zeolite sequesters these toxins very well. The zeolite is simply less effective. For instance, if the particle has ten thousand “cages” and five thousand are already full before it is mined, the particle will not be as effective when introduced as a supplement as a particle with all ten thousand “cages” available.

The Natural Cellular Defense undergoes an ‘activation process’ that forces the removal of all these toxins. This process removes all extraneous metals and empties out the zeolite cage - therefore removing any toxins that were found with the zeolite and ‘activating’ the molecule to be at its most effective. Understand that the zeolite molecule is, for all practical purposes, indestructible.

Heat up to 900° Fahrenheit will not crack the molecule and it can be frozen in solution and defrosted without any change in activity. It is also amphoteric – meaning that it exists just as well in an acidic or a basic environment. The zeolite is activated in a very weak acid under high temperature conditions. This does not break the zeolite down; it simply forces the evacuation of stored toxins in the zeolite cage.

For purposes of activation, heat is added to the system *only* to increase the bond resonance within the structure of the cage, effectively “loosening the grip” of the zeolite, promoting a more complete exchange of the naturally occurring toxic metal ions with more beneficial ones. Being positively charged and thus absorbed by the zeolite, Calcium and Magnesium are used to exchange for the toxins.

These healthy metals migrate back into the zeolite and help stabilize the molecule. After ingestion, they easily undergo cationic exchange with metals that are higher in the affinity scale of the zeolite (i.e. Mercury, Lead, Cadmium, etc.). Without this process, other zeolite products must contain toxins and heavy metals as part of the zeolite cage. Additionally, without a heat process or some preservative, they must contain bacterial and fungal contamination.

The Natural Cellular Defense is the only zeolite formulation that is micronized and activated.

## **Synergies of IM6 & NCD - Claims and Benefits**

The concept of synergistic benefits takes into account that two or more substances work together so that their total effect is greater than the sum of their individual benefits. In biochemistry, this is usually a result of substances having similar benefits that are created through different mechanisms of action. Because the mechanisms are isolated from each other, their benefits can be maximized and usually results in synergy. When examining the synergies between the mushroom blend and the activated zeolite, it is simple to note several distinct claims with differing mechanism to support those claims.

### *Both products act as immuno-modulators.*

The zeolite does not stimulate the immune system, but allows it to function optimally by removing toxins, viruses, yeasts, bacteria, and fungi which can depress immune function and interfere with hormones.

Additionally, heavy metals have been indicated in the inhibition or down-regulation of zinc finger proteins<sup>105</sup>. These proteins are necessary for proper cell division and immune system response. The zeolite has been indicated in stabilizing zinc finger protein activation through the removal of inhibitory toxic heavy metals. As noted previously, the mushroom blend modulates the immune system by cellular signaling. This increases T-Cell activation without creating a hyper-immune response<sup>8</sup>. These provide several different mechanisms to activate and stabilize immune system function.

*Both products provide superior antioxidant protection.*

Clinoptilolite is considered to act as an antioxidant through a simple mechanism of the capture and removal of small, oxidative compounds<sup>93,94</sup>. The IM6 functions as an antioxidant because of its constituent antioxidant compounds, which include co-factors and polysaccharides. These quench free radicals through electron donation or electron acceptance. Again, there are two completely different mechanisms that provide the same benefit - creating a synergistic effect.

*Anti-Mutagenesis.*

Several studies have shown the effects of clinoptilolite on cancer cell lines and in tumors both in vivo and in vitro<sup>103,104</sup>. This is primarily considered to be caused by the induction of apoptosis and the zeolite's activation of the p21 tumor suppression gene<sup>102</sup>. Additionally, the zeolite acts to balance the body's pH<sup>95,96</sup> and may create an inhospitable environment for cancer cell growth as systemic alkalinity is maintained. Mushroom extracts have been studied almost exclusively for their effects against cancer cell growth<sup>1,6,7,10,12,13,16,21-26,30-35,42-46,51,61-65,67,68,73,79-81</sup>. The mechanism involved in this case is through immune system activation and immuno-modulation. The expected synergies result in a powerful immuno-modulating agent that reduces the risk of mutagenesis.

## REFERENCES

1. Isolation of an antitumor compound from *Agaricus blazei* Murrill and its mechanism of action. Takaku T, Kimura Y, Okuda H. *J Nutr.* 2001 May;131(5):1409-13.
2. *Agaricus blazei* Murrill medicinal and dietary effects. Mizuno TK. *Food Rev Int* 1995;11:167–72.
3. The Medicinal Mushroom *Agaricus blazei* Murrill: Review of Literature and Pharmacotoxicological Problems. Firenzuoli F, Gori L, Lombardo G. *Evid Based Complement Alternat Med.* 2008 Mar;5(1):3-15.
4. *Agaricus blazei* Murrill medicinal and dietary effects. Mizuno TK. *Food Rev Int* 1995;11:167–72.
5. Estrogen-like activity and dual roles in cell signaling of an *Agaricus blazei* Murrill mycelia-dikaryon extract. Dong S, et al. *Microbiol Res.* 2012 Apr 20;167(4):231-7
6. Isolation of an anti-angiogenic substance from *Agaricus blazei* Murrill: its antitumor and antimetastatic actions. Kimura Y, et al. *Cancer Sci.* 2004 Sep;95(9):758-64.
7. The Mushroom *Agaricus blazei* Murrill Elicits Medicinal Effects on Tumor, Infection, Allergy, and Inflammation through Its Modulation of Innate Immunity and Amelioration of Th1/Th2 Imbalance and Inflammation. Hetland G, et al. *Adv Pharmacol Sci.* 2011;2011:157015. Epub 2011 Sep 6.
8. Interleukin-12- and interferon-gamma-mediated natural killer cell activation by *Agaricus blazei* Murrill. Yuminamochi E, et al. *Immunology.* 2007 Jun;121(2):197-206
9. The effect of royal sun *Agaricus brasiliensis* S. Wasser et al., extract on methyl methanesulfonate caused genotoxicity in *Drosophila melanogaster*. Savić T, et al. *Int J Med Mushrooms.* 2011;13(4):377-85.
10. Primary mechanism of apoptosis induction in a leukemia cell line by fraction FA-2-b-ss prepared from the mushroom *Agaricus blazei* Murrill. Gao L, et al. *Braz J Med Biol Res.* 2007 Nov;40(11):1545-55.
11. Blazeispirol A from *Agaricus blazei* fermentation product induces cell death in human hepatoma Hep 3B cells through caspase-dependent and caspase-independent pathways. Su ZY, et al. *J Agric Food Chem.* 2011 May 11;59(9):5109-16
12. Agaritine from *Agaricus blazei* Murrill induces apoptosis in the leukemic cell line U937. Akiyama H, et al. *Biochim Biophys Acta.* 2011 May;1810(5):519-25.
13. Inhibition of human colon carcinoma development by lentinan from shiitake mushrooms (*Lentinus edodes*). Ng ML, Yap AT. *J Altern Complement Med.* 2002 Oct;8(5):581-9.
14. Lentinan from shiitake mushroom (*Lentinus edodes*) suppresses expression of cytochrome P450 1A subfamily in the mouse liver. Okamoto T, et al. *Biofactors.* 2004;21(1-4):407-9.
15. Lentin, a novel and potent antifungal protein from shiitake mushroom with inhibitory effects on activity of human immunodeficiency virus-1 reverse transcriptase and proliferation of leukemia cells. Ngai PH, Ng TB. *Life Sci.* 2003 Nov 14;73(26):3363-74.
16. Inhibition of growth and induction of apoptosis in human cancer cell lines by an ethyl acetate fraction from shiitake mushrooms. Fang N, et al. *J Altern Complement Med.* 2006 Mar;12(2):125-32.
17. In vitro cytostatic and immunomodulatory properties of the medicinal mushroom *Lentinula edodes*. Israilides C, et al. *Phytomedicine.* 2008 Jun;15(6-7):512-9.
18. In vitro antioxidant activity and hepatoprotective effects of *Lentinula edodes* against paracetamol-induced hepatotoxicity. Sasidharan S, et al. *Molecules.* 2010 Jun 23;15(6):4478-89
19. *Lentinula edodes* (Berk.) Pegler (Shiitake) modulates genotoxic and mutagenic effects induced by alkylating agents in vivo. de Lima PL, et al. *Mutat Res.* 2001 Sep 20;496(1-2):23-32.
20. The anticarcinogenic effect of a food extract (shiitake) in a short-term clinical study. Lingström P, et al. *J Biomed Biotechnol.* 2012;2012:217164
21. Effects of a mushroom mycelium extract on the treatment of prostate cancer. de Vere White RW, et al. *Urology.* 2002 Oct;60(4):640-4.
22. Clinical efficacy of superfine dispersed lentinan (beta-1,3-glucan) in patients with hepatocellular carcinoma. Isoda N, et al.

- Hepatogastroenterology*. 2009 Mar-Apr;56(90):437-41.
23. Improvement of QOL and prognosis by treatment of superfine dispersed lentinan in patients with advanced gastric cancer. Yoshino S, et al. *Hepatogastroenterology*. 2010 Jan-Feb;57(97):172-7.
  24. Efficacy of orally administered superfine dispersed lentinan (beta-1,3-glucan) for the treatment of advanced colorectal cancer. Hazama S, et al. *Anticancer Res*. 2009 Jul;29(7):2611-7.
  25. Efficacy of oral administered superfine dispersed lentinan for advanced pancreatic cancer. Shimizu K, et al. *Hepatogastroenterology*. 2009 Jan-Feb;56(89):240-4.
  26. A phase I/II trial of a polysaccharide extract from *Grifola frondosa* (Maitake mushroom) in breast cancer patients: immunological effects. Deng G, et al. *J Cancer Res Clin Oncol*. 2009 Sep;135(9):1215-21
  27. Enhancement of cytotoxicity of NK cells by D-Fraction, a polysaccharide from *Grifola frondosa*. Kodama N, et al. *Oncol Rep*. 2005 Mar;13(3):497-502.
  28. Administration of a polysaccharide from *Grifola frondosa* stimulates immune function of normal mice. Kodama N, et al. *J Med Food*. 2004 Summer;7(2):141-5.
  29. Immunomodulatory properties of *Grifola frondosa* in submerged culture. Wu MJ, et al. *J Agric Food Chem*. 2006 Apr 19;54(8):2906-14.
  30. Characterization and antitumor effect of a novel polysaccharide from *Grifola frondosa*. Masuda Y, et al. *J Agric Food Chem*. 2009 Nov 11;57(21):10143-9.
  31. Synergistic potentiation of interferon activity with maitake mushroom d-fraction on bladder cancer cells. Louie B, et al. *BJU Int*. 2010 Apr;105(7):1011-5.
  32. Effect of various natural products on growth of bladder cancer cells: two promising mushroom extracts. Konno S. *Altern Med Rev*. 2007 Mar;12(1):63-8.
  33. Induction of apoptosis in human prostatic cancer cells with beta-glucan (Maitake mushroom polysaccharide). Fullerton SA, et al. *Mol Urol*. 2000 Spring;4(1):7-13.
  34. The use of mushroom glucans and proteoglycans in cancer treatment. Kidd PM. *Altern Med Rev*. 2000 Feb;5(1):4-27.
  35. Antitumor activity of a beta-1,3-glucan obtained from liquid cultured mycelium of *Grifola frondosa*. Ohno N, et al. *J Pharmacobiodyn*. 1986 Oct;9(10):861-4.
  36. Submerged culture mycelium and broth of *Grifola frondosa* improve glycemic responses in diabetic rats. Lo HC, et al. *Am J Chin Med*. 2008;36(2):265-85.
  37. Anti-diabetic effect of an alpha-glucan from fruit body of maitake (*Grifola frondosa*) on KK-Ay mice. Hong L, et al. *J Pharm Pharmacol*. 2007 Apr;59(4):575-82.
  38. Inhibitory effects of medicinal mushrooms on  $\alpha$ -amylase and  $\alpha$ -glucosidase - enzymes related to hyperglycemia. Su CH, et al. *Food Funct*. 2013 Feb 8
  39. Cyclooxygenase inhibitory and antioxidant compounds from the mycelia of the edible mushroom *Grifola frondosa*. Zhang Y, et al. *J Agric Food Chem*. 2002 Dec 18;50(26):7581-5.
  40. *Grifola frondosa* (maitake mushroom) water extract inhibits vascular endothelial growth factor-induced angiogenesis through inhibition of reactive oxygen species and extracellular signal-regulated kinase phosphorylation. Lee JS, et al. *J Med Food*. 2008 Dec;11(4):643-51
  41. Proteomic analyses using *Grifola frondosa* metalloendoprotease Lys-N. Hohmann L, et al. *J Proteome Res*. 2009 Mar;8(3):1415-22.
  42. Protein-bound polysaccharide-K (PSK) induces apoptosis via p38 mitogen-activated protein kinase pathway in promyelomonocytic leukemia HL-60 cells. Hirahara N, et al. *Anticancer Res*. 2012 Jul;32(7):2631-7.
  43. Protein-bound polysaccharide-K (PSK) induces apoptosis and inhibits proliferation of promyelomonocytic leukemia HL-60 cells. Hirahara N, et al. *Anticancer Res*. 2011 Sep;31(9):2733-8.
  44. Polysaccharopeptides derived from *Coriolus versicolor* potentiate the S-phase specific cytotoxicity of Camptothecin (CPT) on human leukemia HL-60 cells. Wan JM, et al. *Chin Med*. 2010 Apr 27;5:16.
  45. Differential anti-tumor activity of *coriolus versicolor* (Yunzhi) extract through p53- and/or Bcl-2-dependent apoptotic pathway in human breast cancer cells. Ho CY, et al. *Cancer Biol Ther*. 2005 Jun;4(6):638-44.

46. Molecular characterization of *Coriolus versicolor* PSP-induced apoptosis in human promyelotic leukemic HL-60 cells using cDNA microarray. Zeng F, et al. *Int J Oncol*. 2005 Aug;27(2):513-23.
47. Polysaccharopeptide from *Coriolus versicolor* has potential for use against human immunodeficiency virus type 1 infection. Collins RA, Ng TB. *Life Sci*. 1997;60(25):PL383-7.
48. Correlation between efficacy of PSK postoperative adjuvant immunochemotherapy for gastric cancer and expression of MHC class I. Ito G, et al. *Exp Ther Med*. 2012 Jun;3(6):925-930.
49. Free radical scavenging activities of mushroom polysaccharide extracts. Liu F, et al. *Life Sci*. 1997;60(10):763-71.
50. Polysaccharide peptides from COV-1 strain of *Coriolus versicolor* induce hyperalgesia via inflammatory mediator release in the mouse. Chan SL, Yeung JH. *Life Sci*. 2006 Apr 18;78(21):2463-70.
51. *Coriolus versicolor* polysaccharide peptide slows progression of advanced non-small cell lung cancer. Tsang KW, et al. *Respir Med*. 2003 Jun;97(6):618-24.
52. Immunomodulatory activities of Yunzhi and Danshen in post-treatment breast cancer patients. Wong CK, et al. *Am J Chin Med*. 2005;33(3):381-95.
53. Immunomodulatory effects of yun zhi and danshen capsules in health subjects--a randomized, double-blind, placebo-controlled, crossover study. Wong CK, et al. *Int Immunopharmacol*. 2004 Feb;4(2):201-11.
54. *Ganoderma lucidum* and its pharmaceutically active compounds. Boh B, et al. *Biotechnol Annu Rev*. 2007;13:265-301. Review.
55. Lucidenic acids-rich extract from antlered form of *Ganoderma lucidum* enhances TNF $\alpha$  induction in THP-1 monocytic cells possibly via its modulation of MAP kinases p38 and JNK. Watanabe K, et al. *Biochem Biophys Res Commun*. 2011 Apr 29;408(1):18-24.
56. Characterization and immunostimulatory activity of a polysaccharide from the spores of *Ganoderma lucidum*. Guo L, et al. *Int Immunopharmacol*. 2009 Sep;9(10):1175-82.
57. Studies on screening, isolation and purification of a fibrinolytic protease from an isolate (VK12) of *Ganoderma lucidum* and evaluation of its antithrombotic activity. Kumaran S, et al. *Med Mycol J*. 2011;52(2):153-62.
58. Randomized clinical trial of an ethanol extract of *Ganoderma lucidum* in men with lower urinary tract symptoms. Noguchi M, et al. *Asian J Androl*. 2008 Sep;10(5):777-85.
59. Effect of an extract of *Ganoderma lucidum* in men with lower urinary tract symptoms: a double-blind, placebo-controlled randomized and dose-ranging study. Noguchi M, et al. *Asian J Androl*. 2008 Jul;10(4):651-8
60. Study of potential cardioprotective effects of *Ganoderma lucidum* (Lingzhi): results of a controlled human intervention trial. Chu TT, et al. *Br J Nutr*. 2012 Apr;107(7):1017-27
61. Suppression of proliferation and oxidative stress by extracts of *Ganoderma lucidum* in the ovarian cancer cell line OVCAR-3. Hsieh TC, Wu JM. *Int J Mol Med*. 2011 Dec;28(6):1065-9
62. Effects of *ganoderma lucidum* extract on chemotherapy-induced nausea and vomiting in a rat model. Wang CZ, et al. *Am J Chin Med*. 2005;33(5):807-15.
63. Enhancement of radiation response with combined *Ganoderma lucidum* and *Duchesnea chrysantha* extracts in human leukemia HL-60 cells. Kim KC, et al. *Int J Mol Med*. 2008 Apr;21(4):489-98.
64. *Ganoderma lucidum* exerts anti-tumor effects on ovarian cancer cells and enhances their sensitivity to cisplatin. Zhao S, et al. *Int J Oncol*. 2011 May;38(5):1319-27.
65. Prevention of cisplatin induced nephrotoxicity by terpenes isolated from *Ganoderma lucidum* occurring in Southern Parts of India. Pillai TG, et al. *Exp Toxicol Pathol*. 2011 Jan;63(1-2):157-60.
66. *Ganoderma lucidum* ('Lingzhi'); acute and short-term biomarker response to supplementation. Wachtel-Galor S, et al. *Int J Food Sci Nutr*. 2004 Feb;55(1):75-83.
67. Effects of ganopoly (a *Ganoderma lucidum* polysaccharide extract) on the immune functions in advanced-stage cancer patients. Gao Y, et al. *Immunol Invest*. 2003 Aug;32(3):201-15.

68. "And what other medications are you taking?". Gordan JD, et al. *J Clin Oncol*. 2011 Apr 10;29(11)
69. Yartsa Gunbu (*Cordyceps sinensis*) and the Fungal Commodification of the Rural Economy in Tibet Winkler, D. *Economic Botany* 2008a. AR. 63.2: 291–306
70. *Cordyceps* fungi: natural products, pharmacological functions and developmental products. Zhou X, et al. *J Pharm Pharmacol*. 2009 Mar;61(3):279-91
71. Anti-asthmatic activities in mycelial extract and culture filtrate of *Cordyceps sphecocephala* J201. Heo JC, et al. *J Nat Prod*. 2010 Jan;73(1):75-8.
72. An antimycobacterial cyclodepsipeptide from the entomopathogenic fungus *Ophiocordyceps communis* BCC 16475. Nam SH, et al. *Int J Mol Med*. 2010 Sep;26(3):351-6.
73. Induction of apoptosis by cordycepin via reactive oxygen species generation in human leukemia cells. Haritakun R, et al. *Toxicol In Vitro*. 2011 Jun;25(4):817-24
74. Enhancement of ATP generation capacity, antioxidant activity and immunomodulatory activities by Chinese Yang and Yin tonifying herbs. Ko KM, Leung HY. *Chin Med*. 2007 Mar 27;2:3
75. Cardiovascular Protection and Antioxidant Activity of the Extracts from the Mycelia of *Cordyceps Sinensis* Act Partially Via Adenosine Receptors. Yan XF, et al. *Phytother Res*. 2012 Nov 28
76. [Antiarrhythmic effects of *Cordyceps sinensis* (Berk.) Sacc]. Mei QB, et al. *Zhongguo Zhong Yao Za Zhi*. 1989 Oct;14(10):616-8, 640.
77. *Cordyceps sinensis* as an immunomodulatory agent. Kuo YC, et al. *Am J Chin Med*. 1996;24(2):111-25.
78. Compound *Cordyceps* TCM-700C exhibits potent hepatoprotective capability in animal model. Ko WS, et al. *Fitoterapia*. 2010 Jan;81(1):1-7
79. Cordycepin induces apoptosis in human neuroblastoma SK-N-BE(2)-C and melanoma SK-MEL-2 cells. Baik JS, et al. *Indian J Biochem Biophys*. 2012 Apr;49(2):86-91.
80. Cordycepin-induced apoptosis and autophagy in breast cancer cells are independent of the estrogen receptor. Choi S, et al. *Toxicol Appl Pharmacol*. 2011 Dec 1;257(2):165-73.
81. Activation of innate immunity to reduce lung metastases in breast cancer. Jordan JL, et al. *Cancer Immunol Immunother*. 2010 May;59(5):789-97.
82. Antiaging effect of *Cordyceps sinensis* extract. Ji DB, et al. *Phytother Res*. 2009 Jan;23(1):116-22
83. Aflatoxin B1 and clinoptilolite in feed for laying hens: effects on egg quality, mycotoxin residues in livers, and hepatic mixed-function oxygenase activities. Rizzi, et. al. *J Food Prot*. 2003 May;66(5):860-5.
84. The effect of feeding zeolite (clinoptilolite) on the health status of sheep. Bartko, et. al. *Vet Med (Praha)*. 1983 Aug;28(8):481-92
85. Effects of long-term dietary supplementation with clinoptilolite on incidence of parturient paresis and serum concentrations of total calcium, phosphate, magnesium, potassium, and sodium in dairy cows. Katsoulos et. al. *Am J Vet Res*. 2005 Dec;66(12):2081-5.
86. Effects of long-term feeding dairy cows on a diet supplemented with clinoptilolite on certain serum trace elements. Katsoulos et. al. *Biol Trace Elem Res*. 2005 Winter;108(1-3):137-45.
87. USFDA GRAS status (generally recognized as safe) (CFR) Title 21; Subpart C; Sec. 182.2727
88. The removal of heavy metal cations by natural zeolites. Erdem E, Karapinar N, Donat R. *J Colloid Interface Sci*. 2004 Dec 15;280(2):309-14.
89. Study of the selection mechanism of heavy metal (Pb<sup>2+</sup>, Cu<sup>2+</sup>, Ni<sup>2+</sup>, and Cd<sup>2+</sup>) adsorption on clinoptilolite. Sprynskyy M, et al. *J Colloid Interface Sci*. 2006 Dec 1;304(1):21-8. *Epub* 2006 Jul 29.
90. Adsorption of nitrosamines in acidic solution by zeolites. Zhou CF, Zhu JH. *Chemosphere*. 2005 Jan;58(1):109-14.
91. Dietary supplementation with the tribomechanically activated zeolite clinoptilolite in immunodeficiency: effects on the immune system. Ivkovic, et. al. *Adv Ther*. 2004 Mar-Apr;21(2):135-47.
92. Immunostimulatory effect of natural clinoptilolite as a possible mechanism of its antimetastatic ability. Pavelic, et. al. *J*

- Cancer Res Clin Oncol*. 2002 Jan;128(1):37-44.
93. Effects of clinoptilolite treatment on oxidative stress after partial hepatectomy in rats. Saribeyoglu K, et al. *Asian J Surg*. 2011 Oct;34(4):153-7. Epub 2012 Feb 15.
  94. Anticancer and antioxidative effects of micronized zeolite clinoptilolite. Zarkovic, et. al. *Anticancer Res*. 2003 Mar-Apr;23(2B):1589-95.
  95. The effect of zeolite on experimentally induced acidosis in sheep. Bartko, et. al. *Vet Med (Praha)*. 1983 Nov;28(11):679-86.
  96. Effects of long-term feeding of a diet supplemented with clinoptilolite to dairy cows on the incidence of ketosis, milk yield and liver function. Katsoulos PD, et al. *Vet Rec*. 2006 Sep 23;159(13):415-8
  97. Dietary aluminosilicate supplement enhances immune activity in mice and reinforces clearance of porcine circovirus type 2 in experimentally infected pigs. Jung BG, et al. *Vet Microbiol*. 2010 Jul 14;143(2-4):117-25.
  98. Antiviral properties of clinoptilolite. Magdalena G, Pavelic K. *Microporous Mesoporous Mater*. 2005 (79)165–169
  99. Investigations of the use of clay minerals and prussian blue in reducing the transfer of dietary radiocaesium to milk. Unsworth et. al. *Sci Total Environ*. 1989 Sep;85:339-47.
  100. The use of clinoptilolite and its sodium form for removal of radioactive cesium, and strontium from nuclear wastewater and Pb<sup>2+</sup>, Ni<sup>2+</sup>, Cd<sup>2+</sup>, Ba<sup>2+</sup> from municipal wastewater. Faghihian H, et al. *Appl Radiat Isot*. 1999 Apr;50(4):655-60.
  101. [In vivo reduction of radiocesium with modified clinoptilolite in sheep]. Jandl J, Novosad J. *Vet Med (Praha)*. 1995 Aug;40(8):237-41
  102. Natural zeolite clinoptilolite: new adjuvant in anticancer therapy. Pavelić K, et al. *J Mol Med (Berl)*. 2001;78(12):708-20.
  103. A clinoptilolite effect on cell media and the consequent effects on tumor cells in vitro. Katic et. al. *Front Biosci*. 2006 May 1;11:1722-32.
  104. Anticancer and antioxidative effects of micronized zeolite clinoptilolite. Zarkovic, et. al. *Anticancer Res*. 2003 Mar-Apr;23(2B):1589-95.
  105. Differential effects of toxic metal compounds on the activities of Fpg and XPA, two zinc finger proteins involved in DNA repair. Asmuss M, et al. *Carcinogenesis*. 2000 Nov;21(11):2097-104.